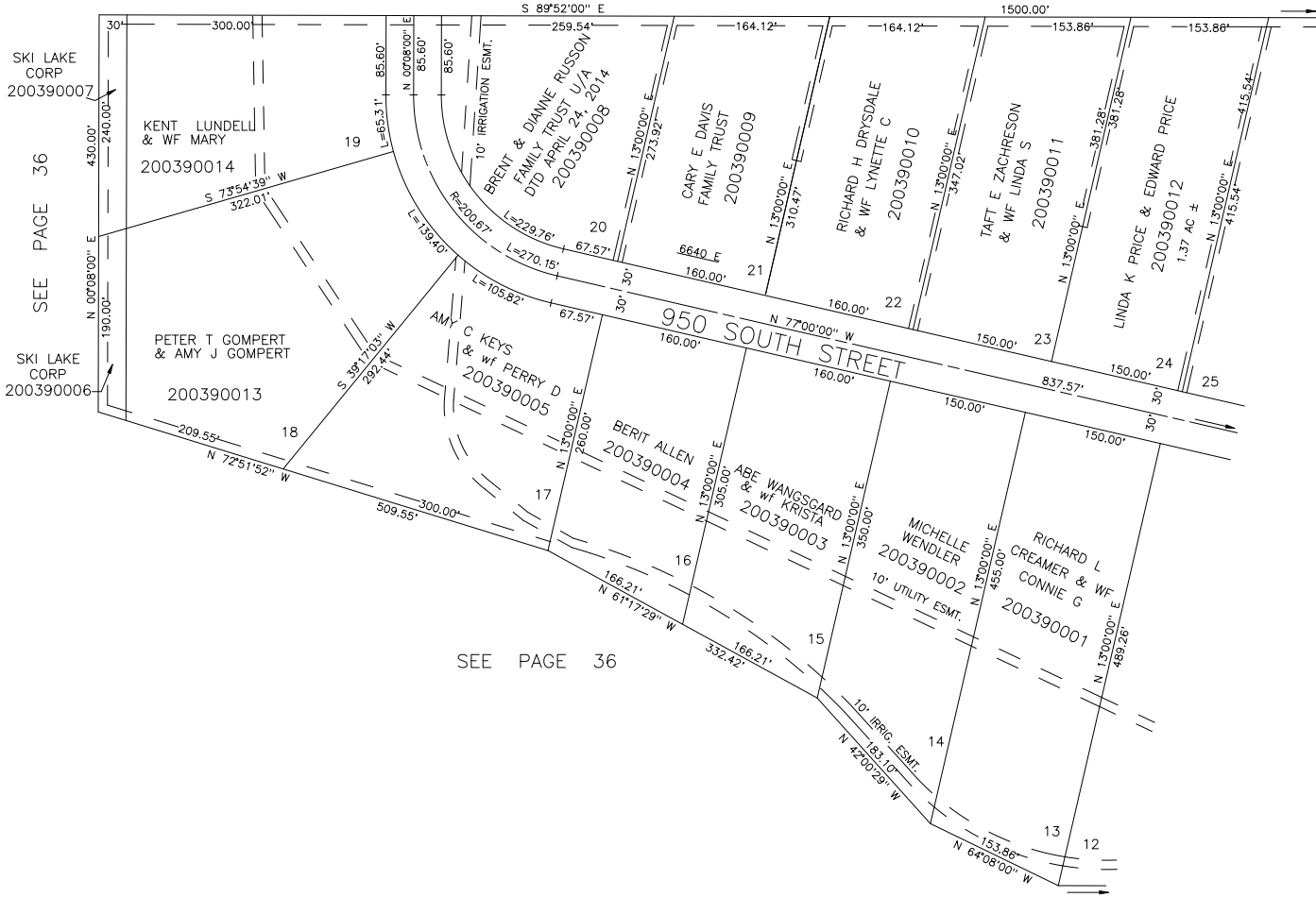


PART OF THE NORTH 1/2 OF SEC. 24, T.6N., R.1E., S.L.B. & M.  
**VALLEY-LAKE ESTATES NO. 2**

TAXING UNIT: 318

LOTS 13-24  
 IN WEBER COUNTY  
 SCALE 1" = 100'

SEE PAGE 13



SEE PAGE 36

SEE PAGE 36

SEE PAGE 36

SEE PAGE 38

10' UTILITY & DRAINAGE EASEMENTS  
 EACH SIDE OF PROPERTY LINES AS  
 INDICATED BY DASHED LINES EXCEPT  
 AS OTHERWISE SHOWN.

FOR COMPLETE ENG DATA SEE  
 ORIGINAL DEDICATION PLAT IN  
 BOOK 15, PAGE 27 OF RECORDS.